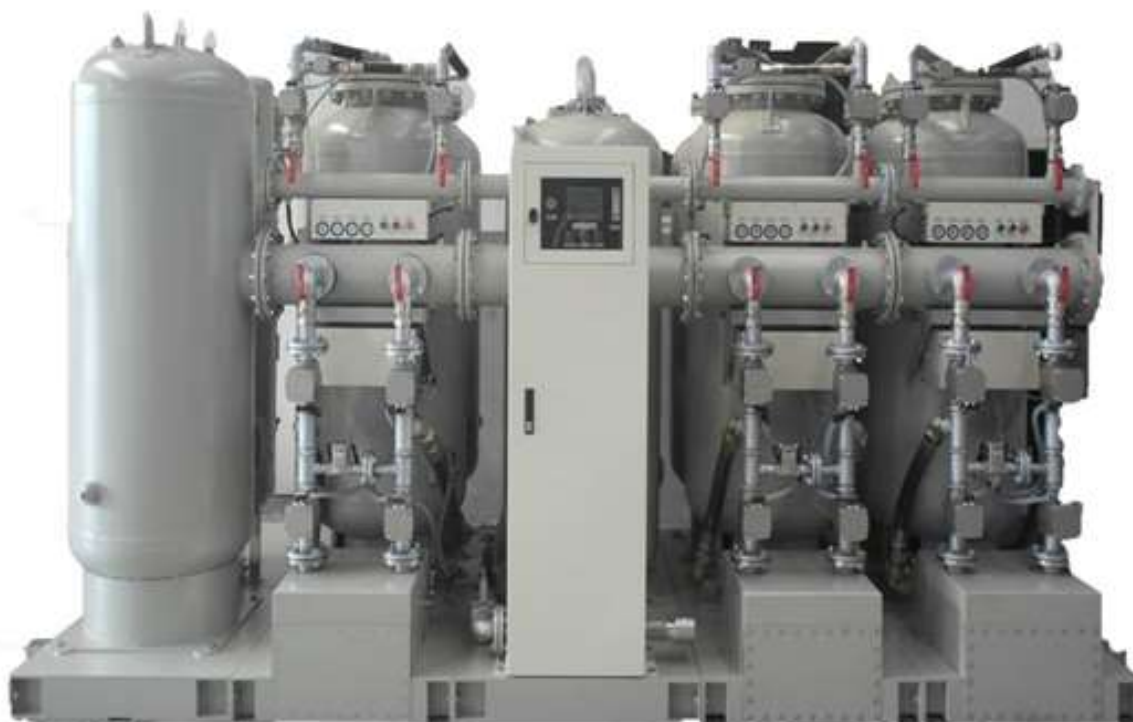


# Yes-Sir Technology YS-N-ID100-1 (Host Machine) PSA Nitrogen Generator Specification



	SPECIFICATION
Machine Type	YS-N-ID-100-1
Machine Size (L×W×H)	800 × 2,000 × 2,290 mm (Machine appearance: Plate pry type)
Buffer Tank Size	1,025*1,025*3,200mm
Filter System Size	766*766*1940mm
Weight	1,600 Kg
O <sub>2</sub> analyzer	FUJIKURA KY-5N-1 (Zirconia)
N <sub>2</sub> Flow Meter	Electronic flowmeter
Electromagnetic Valve	CKD CORPORATION: M4GD210-C8-E2H-3
Silencer Device	CKD CORPORATION: SL-50A
Pressure Gauge	SMC CORPORATION: G46-15-02MC
Electrical Control System	Control interface: Color Human-Machine Interface (HMI) PLC: Delta Electronics-DVP14SS211R
Pipe Texture	Galvanized Steel
Power Consumption	< 0.5KW
Pipe Diameter	Exit pipe diameter: 3 inch
Power	AC 220V/60HZ
Remark	<ol style="list-style-type: none"> <li>1. One host can control three extension machine modules.</li> <li>2. Function: Production manager 、 Remote monitoring.</li> <li>3. License: ASME 、 CE 、 GB</li> </ol>

# Yes-Sir Technology YS-N-ID100-2 (Extension Machine)

## PSA Nitrogen Generator Specification

	SPECIFICATION
Machine Type	YS-N-ID-100-2
Machine Size(L×W×H)	800 × 2,000 × 2,290 mm (Machine appearance: Plate pry type)
Weight	2,600 Kg
CDA Inlet Pressure Require	≥ 7.5Kg/cm <sup>2</sup>
N <sub>2</sub> Outlet Pressure	5 Kg/cm <sup>2</sup>
N <sub>2</sub> Purity	99.99% - 99.999%
N <sub>2</sub> Flow	100M <sup>3</sup> /H – 80 M <sup>3</sup> /H
Electromagnetic Valve	CKD CORPORATION: M4GD210-C8-E2H-3
Filter Pressure Regulator	SMC CORPORATION: AW30-03BG
Pressure Regulating Valve	Wilkerson Corp. USA: R40-CB-000
Silencer Device	CKD CORPORATION: SL-50A
Pressure Gauge	SMC CORPORATION: G46-15-02MC
Carbon Molecular Sieve (CMS)	Japan OGC molecular sieve or same level molecular sieve
Activated Carbon Filter	Made in Japan
Pneumatic valve	SMC CORPORATION
Pipe Texture	Galvanized Steel
Power Consumption	< 0.5KW
Air Compressor Specification Require	55KW (for 100 M <sup>3</sup> /h demand) (Reference remark)
Pipe Diameter	Entrance pipe diameter: 5 inch
Power	AC 220V/60HZ
Remark	<ol style="list-style-type: none"> <li>1. Carbon Molecular Sieve (CMS): Molecular sieve performance: ≥ 120 M<sup>3</sup>/Ton</li> <li>2. Air source inlet requirements: Oil content is not higher than 0.01 PPM; Impurity particle size is not larger than 0.01 micron</li> <li>3. Air Compressor Specification Require : <ol style="list-style-type: none"> <li>A. 100 M<sup>3</sup>/H: 55KW</li> <li>B. 200 M<sup>3</sup>/H: 90KW</li> <li>C. 300 M<sup>3</sup>/H: 132KW</li> <li>D. 400 M<sup>3</sup>/H: 160KW</li> <li>E. The output of the nitrogen machine increases, the smaller the power of the air compressor.</li> <li>F. The output of each model of the air compressor is different, when choosing a nitrogen generator, please kindly provide us with confirmation.</li> </ol> </li> </ol>